



Tiger Lily Products

PO Box 549
Niwot, CO, USA 80544

TLP, Blinder, Bel, Escort, Valentine

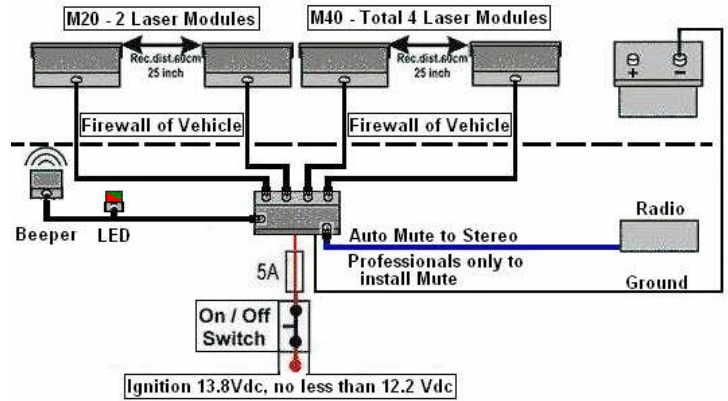
Tel 303-678-9101 Cel: 720-635-3931
Fax 303-678-9103 Cel: 720-298-0557
Email F.John.Turner@TigerLilyProducts.com
WWW.1-Radar-Laser-Jammers-Detectors.com

High
Performance
Electronic
Systems

Blinder™ M20 (Dual) & M40 (Quad) Laser Jammer Installation Instructions

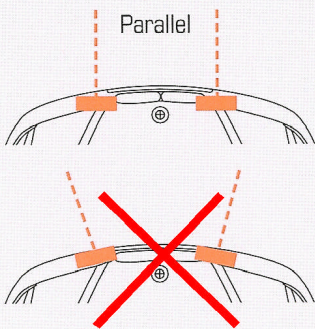
We recommend the customer hire a qualified technician to install the Blinder™ M20/M40 Laser Jammer.

INSTALLATION: The Blinder™ M20 should be mounted on the front of the vehicle, centered between the license plate and center of each headlight. The M40 adds two additional modules, permitting 3 laser modules in front and 1 rear, or 2 in front and 2 rear on either side of the rear license plate. Do not look directly/indirectly into the lens of the Blinder™ at close range, as it emits a bright beam of light invisible to the human eye and will cause eye damage with prolonged exposure. Install the Blinders level and horizontal with the level device provided in the kit. A block diagram for the M20 and M40 installation are shown at right.



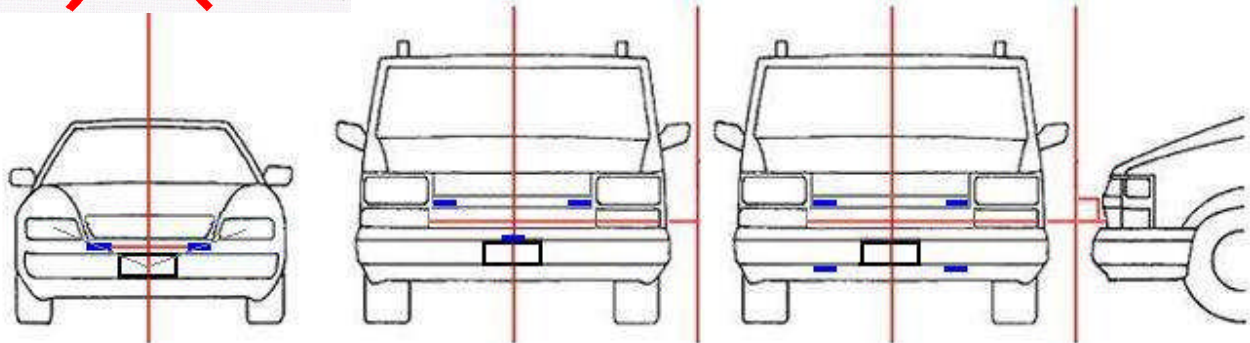
Interface Box

Locate a suitable place for the interface box inside the car's interior. The interface box must not be located in the engine compartment because of moisture. The two cables from the transceivers are plugged into two of the jacks indicated by the numbers 1 to 4.



MOUNTING:

- 1) Locate the ideal horizontal location for the Blinder Module (see drawing below for 2/3/4 install in front). Locate the modules behind the grille for best, hidden view, but do not allow any physical object in front of the lens.
- 2) Make sure the vehicle is parked on a level surface. Install the laser modules level and pointing straight out from the vehicle. If the grille is rounded, ensure the laser modules are pointing straight out and level. See Diagram left.
- 3) Use provided hardware to fix the Blinder into position. Recheck the level of each laser module before and after tightening to position, using the yellow LEVEL device provided. Remove level device after correct install, snap the inserts provided into the level hole of each laser module to achieve a clean, smooth look on each module.
- 4) Each of the Blinder Jammer modules is connected to the single interface via telephone plug in jacks. The installer will need to find a suitable thru hole in the firewall to route the M20 (2) cables or M40 (4) cables through the firewall. Each cable has a firewall grommet, permitting you to replace the present firewall grommet with the Blinder Grommet. You may need to drill a 7/16" (11mm) diameter hole in the firewall. Use the grommet provided on each cable to seal the firewall.



Rated #1, 360° High Performance, PRS1-V™ Prowler Remote™ System

PROWLER Remote, PRS1-V, PRS1-B, PRS3-V, PRS3-B, PRS4-V, PRS4-STI, PRS4-E, Got Performance are trademarks of Tiger Lily Products. All rights reserved. Copyright 1999-2007

Got Performance™



Tiger Lily Products

PO Box 549
Niwot, CO, USA 80544

TLP, Blinder, Bel, Escort, Valentine

Tel 303-678-9101 Cel: 720-635-3931
Fax 303-678-9103 Cel: 720-298-0557
Email F.John.Turner@TigerLilyProducts.com
WWW.1-Radar-Laser-Jammers-Detectors.com

High
Performance
Electronic
Systems

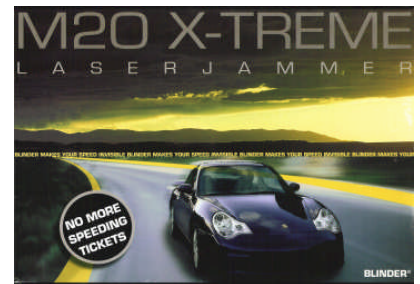
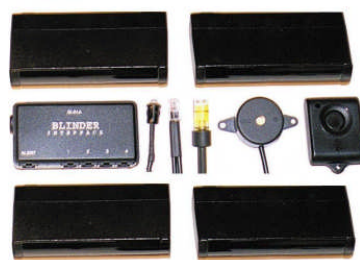
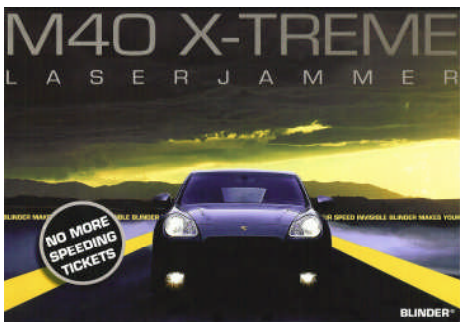
- 5) Ensure cables are routed with existing cable bundles and tie wrap the Blinder cables in position. Ensure no contact across hot surfaces. Connect red lead, to a spare 12Vdc connection in Ignition fuse box. Connect Fuse and Master Power On/off as shown using hardware provided in box. Connect ground black lead of interface module to vehicle ground inside the cab.
- 6) The [BlueWire](#) is a radio mute wire and should only be installed by a professional installer or you could damage your radio.
- 7) Plug Buzzer and LED Alert into appropriate Alert phone plug of the interface module and connect the Buzzer/LED at a location that suits your driving habits (perhaps above the windshield visor, or in the dash, or in the center console).
- 8) Once proper install & electrical hookup is completed, turn Blinder power on. The Blinder™ will go through self test, & beep once for 1 second to indicate it is in test mode, and beep a 2nd time after about 60 seconds. During the 1st and 2nd beep, you can use your TV Remote to test the laser modules by aiming the TV Remote at the detector of the module (may be on left or right side of each laser module, depending how installed) and select channel up or down. This can only be done during the 1st 15- 60 seconds, at which time the 2nd beep occurs, the Blinder goes into normal search and jam, active mode. The LED will be green with power on, and when jamming, will turn red. Turn Blinder power off, then on again, if more time to self test is required.

CUSTOMER MAINTENANCE: The Blinder™ M20 & M40 lens should be cleaned with a clean, soft cotton fabric as often as required to remove dust, mud, etc. Do not scratch the lens in your effort to clean it. Performance is degraded if the lens is muddy or covered by heavy dust. Rock damage, dust and mud can decrease performance.

OPERATION: When the Blinder™ M20 & M40 is turned on, it will go through a self test cycle (see #8 above) and beep once for about 2 seconds to let the driver know it is fully functional and in active mode of operation. When the Blinder™ detects laser, it immediately analyzes the laser gun signal and jams it before the laser gun can display your speed. The Blinder provides an audio alert to the buzzer and the LED changes from green to red. When alerted, the driver should safely check their speed over a period of 2-3 seconds, then shut jamming power off after your speed has been safely adjusted. This allows the laser gun to detect your speed after you have adjusted your speed. After driving through the laser trap, turn the Blinder™ back on, continue your journey safely. Drive alert! Drive smart! Drive safe!

DISCLAIMER: The customer is 100% responsible for his/her driving habits under any/all situations when using the Blinder™. Damage to property or person due to negligence of any person(s) using the Blinder™ is not the responsibility of Tiger Lily Products or its certified Distributors. Tiger Lily Products, nor any of its Distributors condone speeding or unsafe driving.

Warranty: The Blinder™ M20 Dual & M40 Quad Laser Jammer is warranted against defects in material/workmanship for 12 months from purchase date, but does not include road damage caused by rock damage, improper install, incorrect wiring, misuse, wear, etc.



Plug and Play Cables included in both products



Rated #1, 360° High Performance, PRS1-V™ Prowler Remote™ System

PROWLER Remote, PRS1-V, PRS1-B, PRS3-V, PRS3-B, PRS4-V, PRS4-STi, PRS4-E, Got Performance are trademarks of Tiger Lily Products. All rights reserved. Copyright 1999-2007

Got Performance™